

Installation Note

Agilent E5505AK-AHK Kontron Additional Removable Hard Drive



Agilent Technologies

Part Number E5505-90015
Printed in USA July 2011



E5505- 90015

Notice.

The information contained in this document is subject to change without notice.

Agilent Technologies makes no warranty of any kind with regard to this material, including but not limited to, the implied warranties of merchantability and fitness for a particular purpose. Agilent Technologies shall not be liable for errors contained herein or for incidental or consequential damages in connection with the furnishing, performance, or use of this material.

E5505AK-AHK Kontron Additional Removable Hard Drive

Products Affected:	E5505A
Serial Numbers:	All
To Be Performed By:	(X) Agilent Service Center (X) Personnel Qualified by Agilent (X) Customer
Estimated Installation Time:	0.5 Hours
Estimated Adjustment and Verification Time:	0.5 Hours

Introduction

This installation note contains all of the instructions required to install a E5505AK-AHK Kontron additional removable hard drive.

Tools Required

- Phillips screwdriver
- Torx T10

Installation Procedure

When installing an E5505AK-AHK Kontron Removable hard drive you may see the following messages depending upon the location of the GPIB and NI 6111 PCI cards in the computer. The following procedure will step you through configuring your IO. Service Note E5505A-1 addresses moving the PCI cards to different slots and is included below.

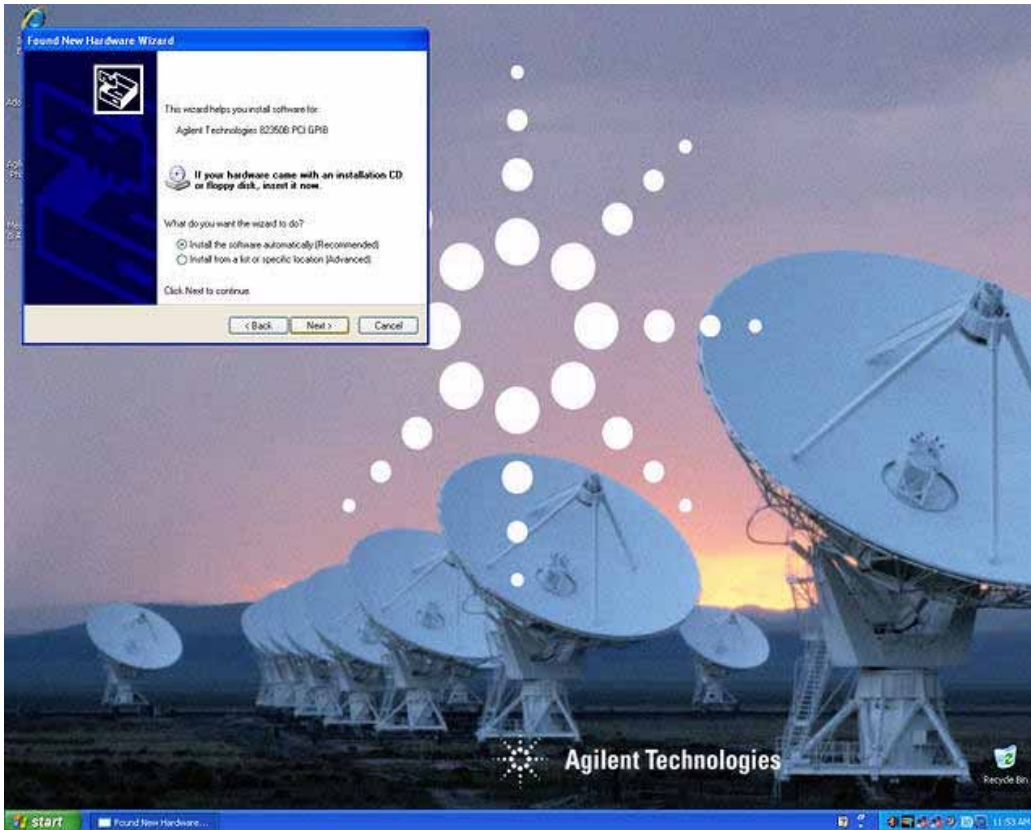
1. Install the hard drive into the Kontron PC and power the computer up.
2. After logging into Windows XP the following message may be displayed. Please select “No, not this time”.

Figure 1



3. The following message will be displayed. Please select “Install the software automatically (Recommended)”

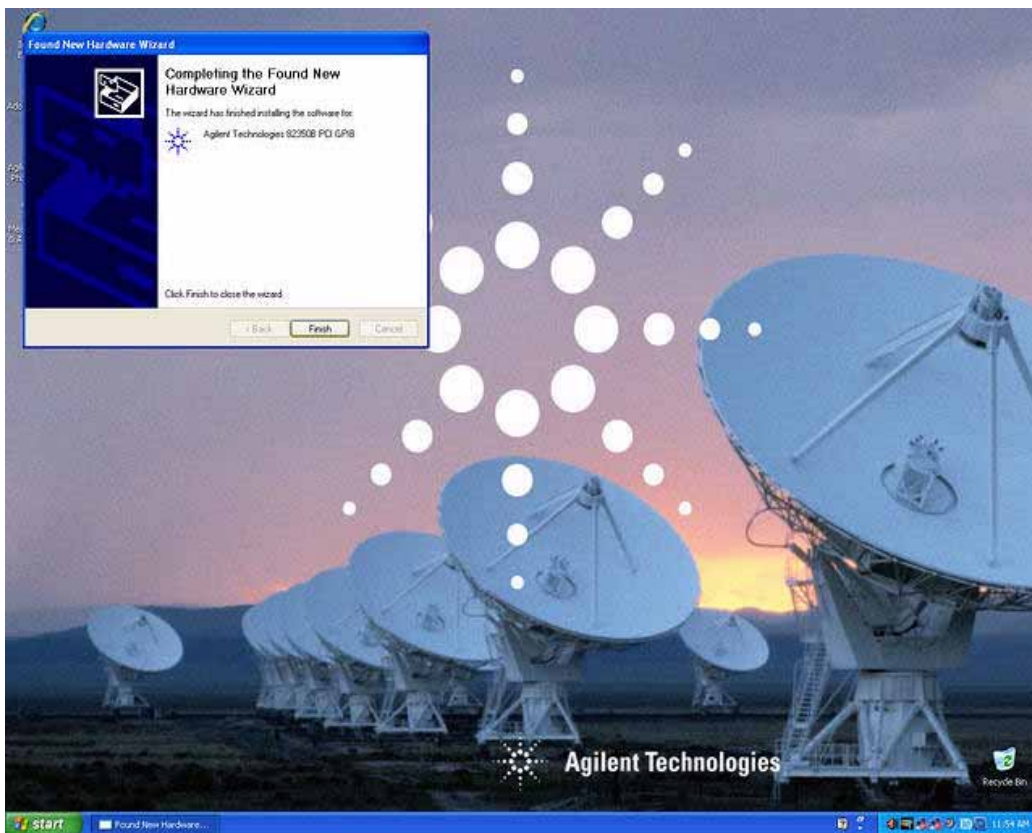
Figure 2



E5505AK-AHK Kontron Additional Removable Hard Drive

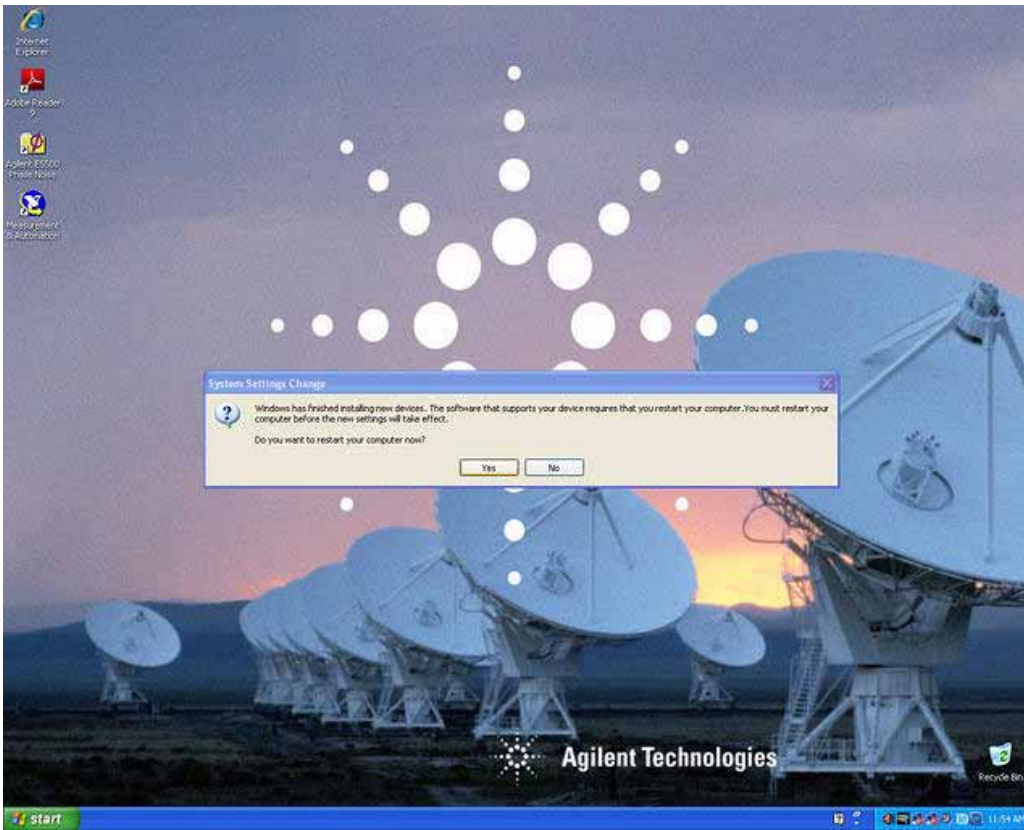
4. The following message will be displayed. Please click on “Finish”.

Figure 3



5. When the following message is displayed, please restart the computer.

Figure 4



E5505AK-AHK Kontron Additional Removable Hard Drive

Service Note E5505A-1

In our current shipping computer configuration the GBIB IO card is in PCI slot 4 and the NI 6111 Digitizer is in slot 2 (as viewed from the right rear side of the computer). An earlier configuration had the GPIB card in slot 3 and the NI 6111 card in slot 1. This new configuration provides better air flow around the PCI cards which will result in longer reliability. If your computer has the old configuration, it is recommended to change to the new configuration.

Please use the following procedure to modify your computer.

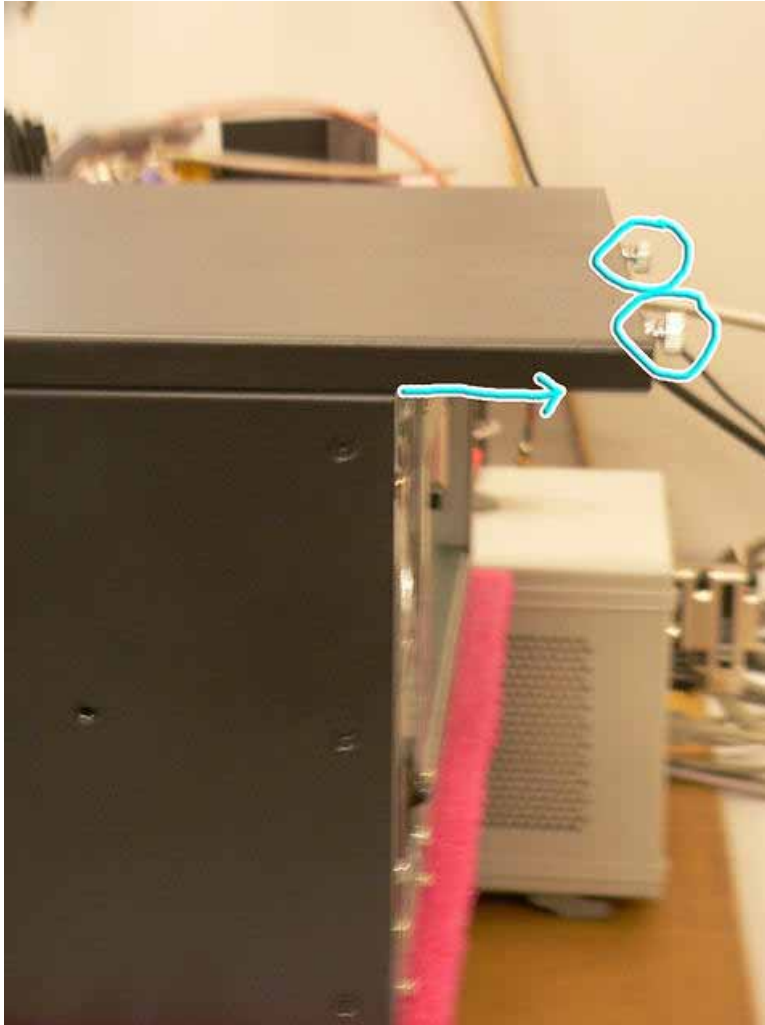
1. The following is a picture of the old configuration as viewed from the back of the computer.

Figure 5



2. Shut down the computer and unplug the power cable. At a safe ESD work area, remove the cover from the Kontron PC by loosening the thumb screws and sliding the cover back.

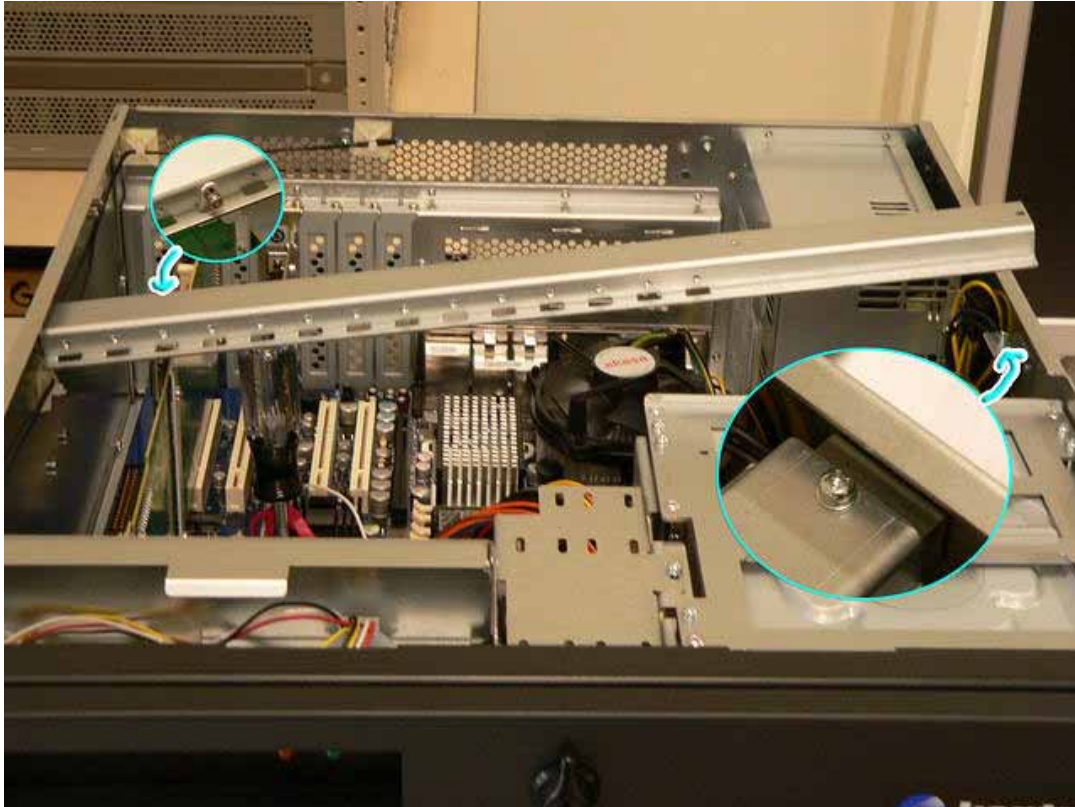
Figure 6



E5505AK-AHK Kontron Additional Removable Hard Drive

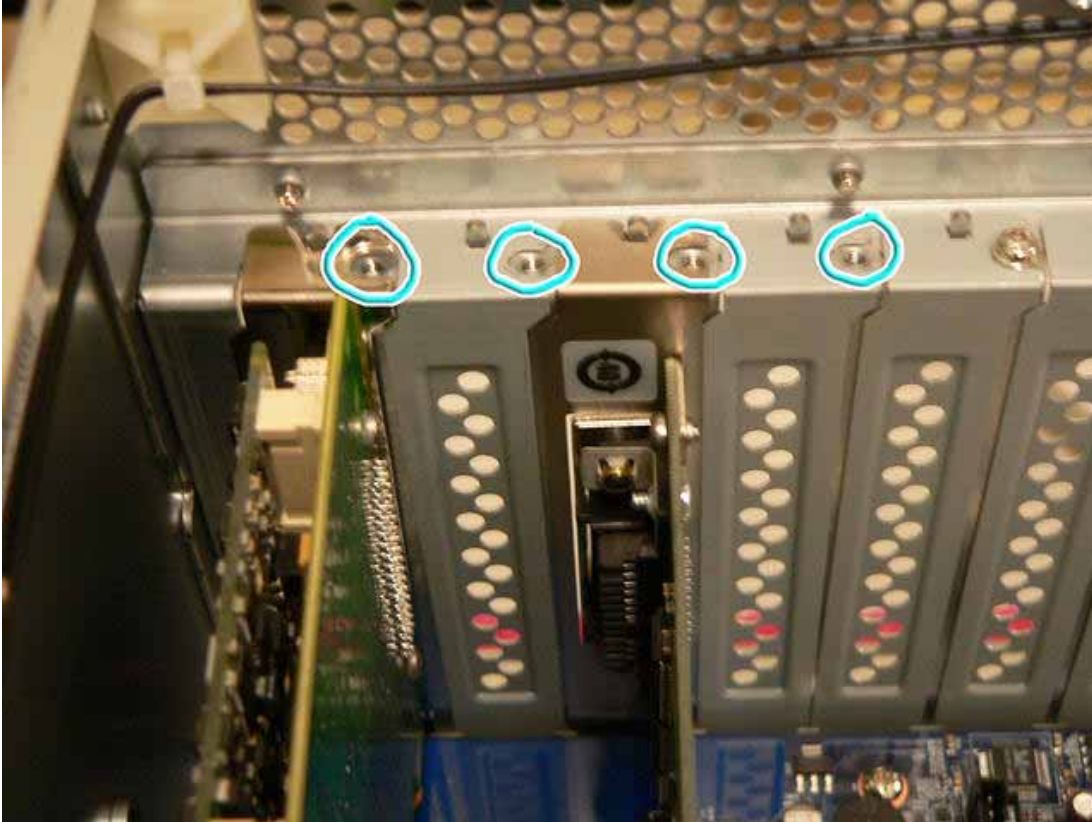
3. Remove the Phillips screw holding the cross brace in place. Remove the Torx T10 screw holding the digitizer bracket to the cross brace and remove the cross brace.

Figure 7



4. Remove the four Phillips screws holding the GPIB card, the NI 6111 card, and the two blank panels in slots 2 and 4.

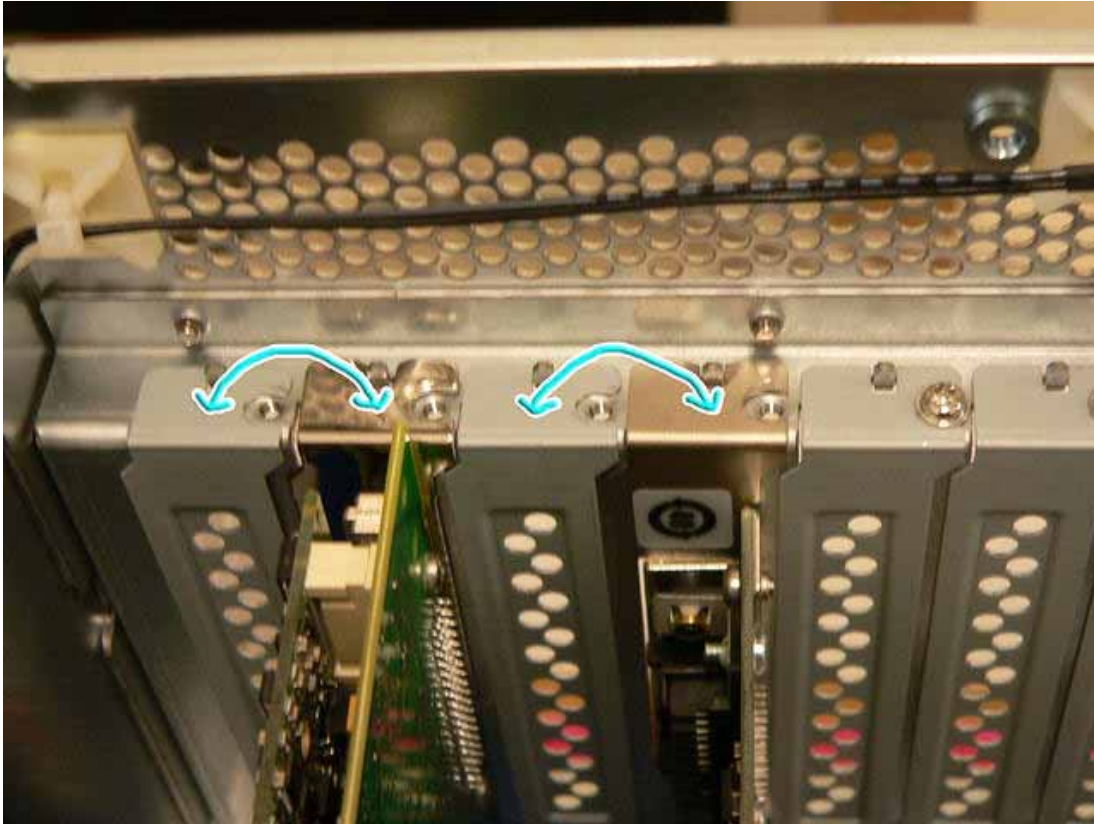
Figure 8



E5505AK-AHK Kontron Additional Removable Hard Drive

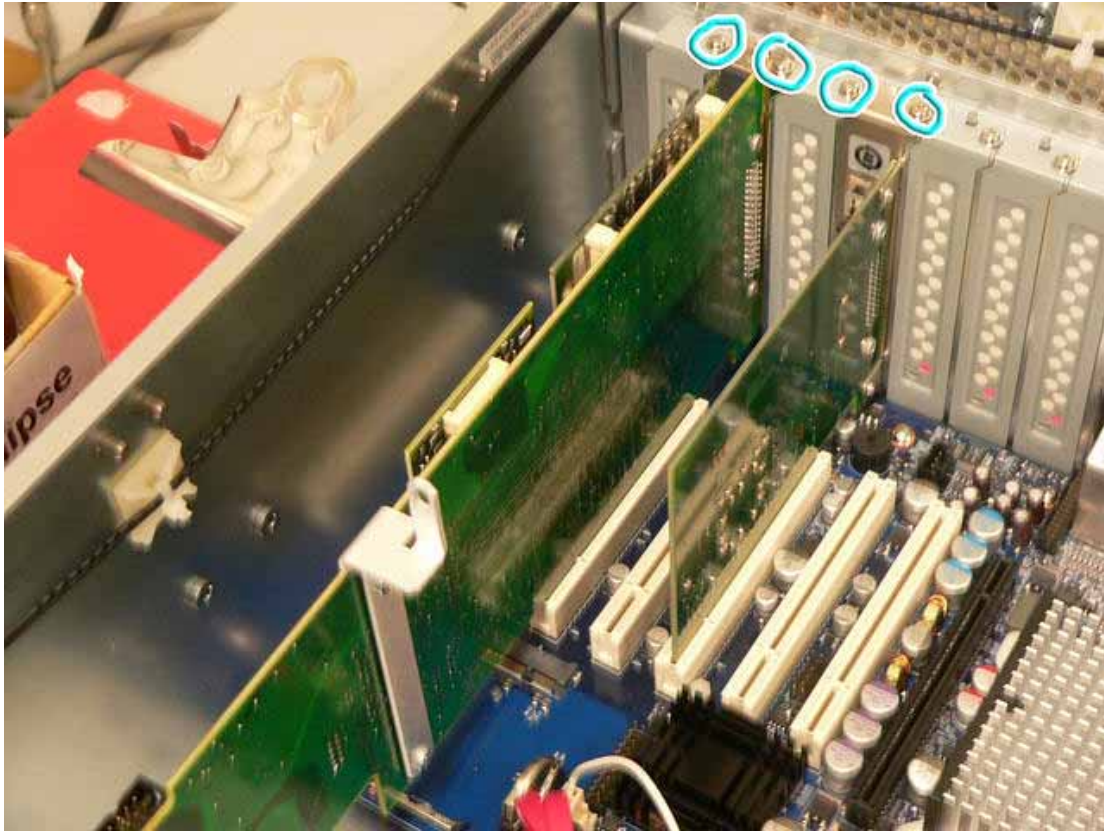
5. Remove the GPIB card from slot 3 and install in slot 4. Remove the NI 6111 card from slot 1 and install in slot 2. Install the blank panels in slots 1 and 3.

Figure 9



6. Insert Phillips screws and secure the PCI cards and blank panels.

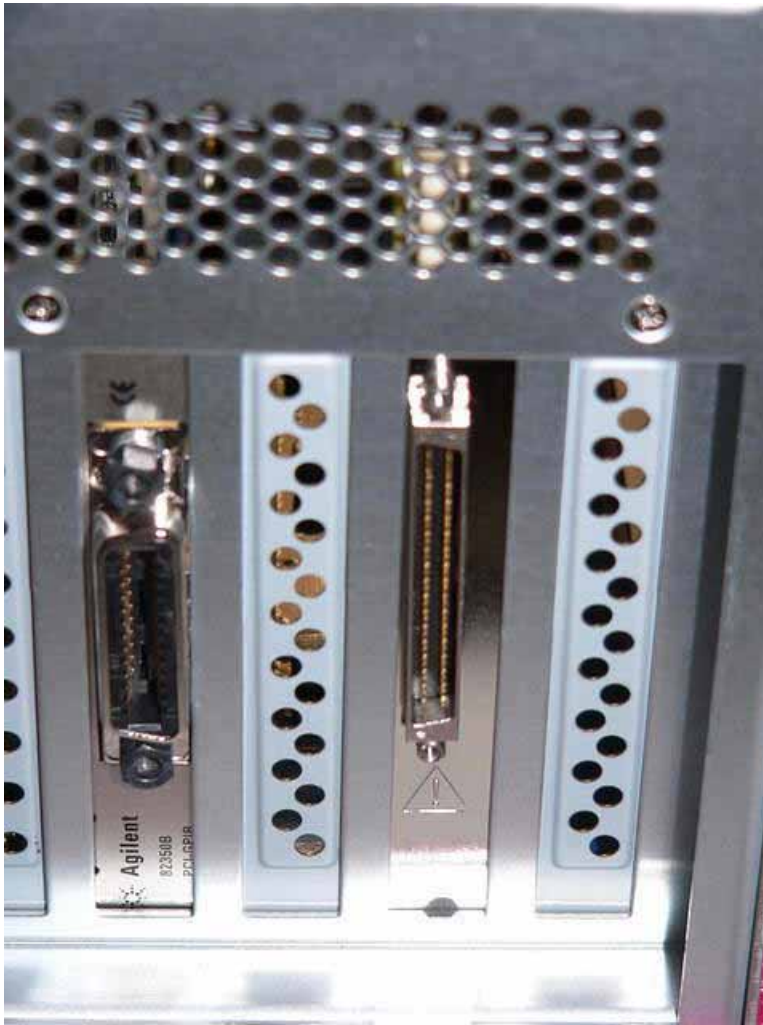
Figure 10



E5505AK-AHK Kontron Additional Removable Hard Drive

7. The rear view of the Kontron PC should look like the following when completed.

Figure 11



8. Re-install the cross brace and the Kontron PC cover.

Utilities, Adjustments, and Performance Verification Tests

Utilities Required

None

Adjustments Required

None

Performance Testing Required

None

For assistance, contact your nearest Agilent Technologies Sales and Service Office. To find your local Agilent office access the following URL, or if in the United States, call the following telephone number:

<http://www.agilent.com/find/assist>

1-800-829-4444 (8 am - 8 pm ET, Monday - Friday)

